



Appendix 1-13: CASGEM Compliance

The three groundwater subbasins that constitute the Coachella Valley Groundwater Basin are the Mission Creek, Indio (also referred to as the Whitewater River Basin), and Desert Hot Spring groundwater sub-basins. The Mission Creek and Indio sub-basins are designated as medium priority basins by DWR and the Desert Hot Springs sub-basin is designated as a low priority sub-basin. As established in CWC §10933.7(a), those basins prioritized as a high or medium priority groundwater basin must have a designated monitoring entity or the organizations within those basins will not be eligible for State funding per the requirements of the California Statewide Groundwater Elevation Monitoring (CASGEM) Program.

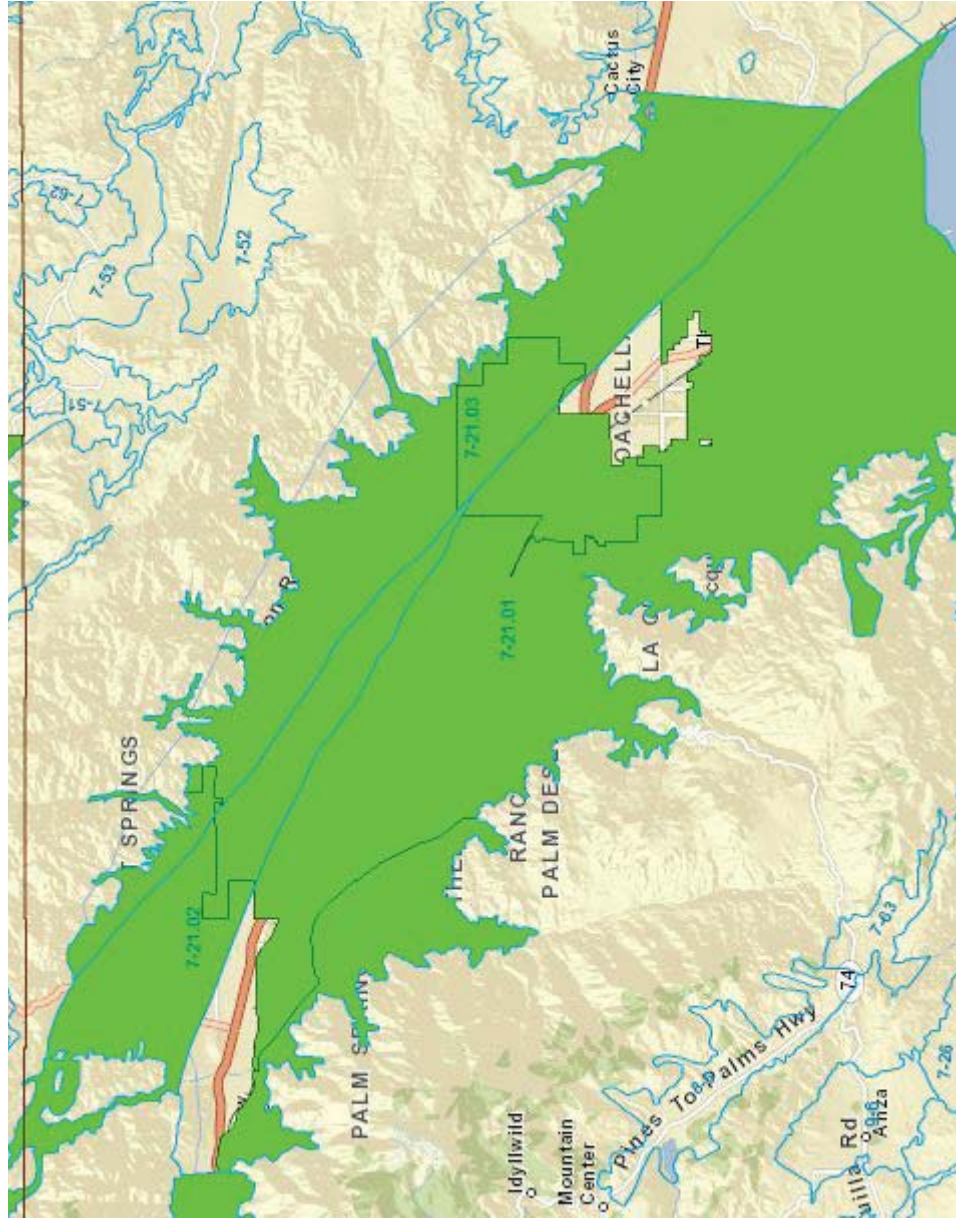
CVWD, DWA, and MSWD have been designated as the water monitoring entities for the three aforementioned basins, with CVWD monitoring the portions of the Mission Creek, Desert Hot Springs, and Indio Subbasins that are within its Service Boundary, DWA monitoring portions of the Indio Sub-basin within its Service Boundary, and MSWD monitoring the portions of the Mission Creek and Desert Hot Springs Subbasins that are within its Service Boundary. The CASGEM program has declared the Status of the Mission Creek, Desert Hot Springs, and Indio Subbasins as “Designated” as of June 10, 2014. The basin priority for each subbasin, basin maps, and designated monitoring entities are included in **Appendix 1-13**. **Figure 1-1** shows the respective service areas of CVWD and IWA (the project sponsors included in this grant proposal), the Coachella Valley groundwater sub-basins, and the designations of each sub-basin. GIS shape files of the CVWD and IWA service areas have been included on the supporting CD that was mailed to DWR with the hard copy of the Proposal.

Project information is as follows:

- Project 1 – IWA Recycled Water Project
 - Location: Latitude 33.744869, Longitude -116.201959
 - Implementing Agency: IWA, service area in Figure 1-1 (pink)
 - Groundwater Sub-basin (Priority) – Monitoring Entity:
 - Indio (Medium) – CVWD and DWA
- Project 2 – Regional Turf Reduction Program
 - Location: Regional Project, does not have exact Latitude and Longitude due to regional nature
 - Implementing Agency: IWA representing the CVRWMG, service area in Figure 1-1 (pink)
 - Groundwater Sub-basin (Priority) – Monitoring Entity:
 - Desert Hot Springs (Low) – CVWD and MSWD
 - Indio (Medium) – CVWD and DWA
 - Mission Creek (Medium) – CVWD and MSWD
- Project 3 – DAC Onsite Plumbing Retrofit Program

- Location: Regional Project, does not have exact Latitude and Longitude due to regional nature
- Implementing Agency: CVWD representing a consortium of local non-profit agencies, service area in Figure 1-1 (orange)
- Groundwater Sub-basin (Priority) – Monitoring Entity:
 - Desert Hot Springs (Low) – CVWD and MSWD
 - Indio (Medium) – CVWD and DWA
 - Mission Creek (Medium) – CVWD and MSWD

CASGEM Groundwater Basin Prioritization Results - Abridged Sorted by Overall Basin Score						Overall Ranking	
Basin count	Basin Number	Basin Name	Sub-Basin Name	Hydrologic Region	DWR Region Office	Overall Basin Ranking Score ***	Overall Basin Priority
134	7-21.03	COACHELLA VALLEY	DESERT HOT SPRINGS	Colorado River	SRO	12.3	Low
65	7-21.01	COACHELLA VALLEY	INDIO	Colorado River	SRO	19.3	Medium
103	7-21.02	COACHELLA VALLEY	MISSION CREEK	Colorado River	SRO	15.8	Medium
* Overall Basin Ranking Score = Population + Population Growth + PSW + (Total Wells x .75) + Irr Acreage + (GW Use + GW %)/2 + Impacts + Other							



Click Here to Hide/Show Banner



