



Coachella Valley IRWM Region

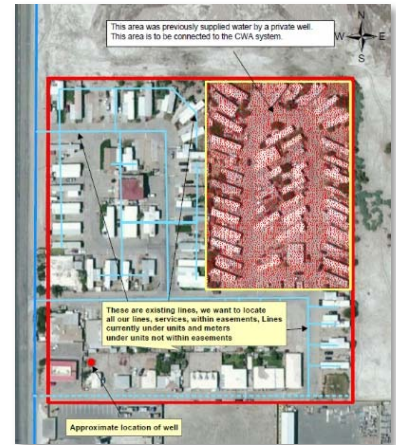
Proposition 1 Round 1 Implementation Grant

Funded Projects

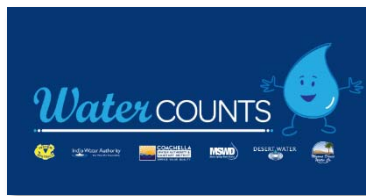
The Coachella Valley IRWM Region was **awarded \$3.8 million** in Proposition 1 Round 1 Implementation funding through the California Department of Water Resources' IRWM Program. The following projects received funding.

Castro Mobile Home Park Water Consolidation

Coachella Water Authority (CWA) will provide the Castro Mobile Home Park (MHP), a disadvantaged community (DAC), with **32 acre feet per year (AFY) of safe, reliable potable drinking water** that exceeds drinking water quality standards. Castro MHP was not previously connected to the CWA water system and relied on a deteriorated shallow groundwater well. Currently, the community relies on a temporary highline from a CWA construction meter as the former well is unable to provide water for potable use or fire protection. This project will install an 8-inch water main and approximately 45 water services, meter boxes, and service reconnections to each tenant space.



CV Water Counts Regional Conservation Program



The *CV Water Counts Regional Conservation Program (CV Water Counts)* was established by the Coachella Valley Regional Water Management Group (CVRWVG) in June 2015 to conserve water in the Coachella Valley. *CV Water Counts* is designed to reduce water demand, increase

the region's water supply, improve regional water quality, and improve efficiency and flexibility. The *CV Water Counts* program was awarded funding for three project components: 1) The **Turf Removal Program** will make turf rebates available for a variety of water customers, including single family residential and multi-family residential customers. 2) The **Conservation Incentives Program**, which includes low flow toilet rebates, addresses water use efficiency of end users (e.g. residents, commercial, and golf courses). 3) The CVWD and DWA **Demonstration Gardens** will be used as an outreach and educational space. It will include displays of various water efficient irrigation systems and ground covers, encourage the use of desert friendly plants, and provide self-guided and group tours. Overall, the program will remove approximately 511,700 square feet of turf, **reducing the need for 1,314 AFY of future purchases of imported water.**

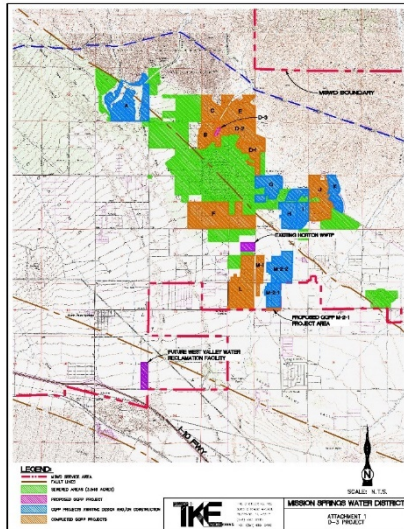


East Coachella Valley Water Supply Project – Avenue 66 Phase 2B

Coachella Valley Water District (CVWD) is implementing the *East Coachella Valley Water Supply Project (ECVWSP) – Avenue 66 Phase 2B* as part of the overall “Saint Anthony MHP Consolidation,” which will connect three small water systems: Manuela Garcia MHP, Seferino Huerta MHP and Saint Anthony MHP. The project will **provide 13 AFY of clean, safe, affordable, and accessible water** for human consumption, cooking, and sanitary purposes by connecting the Manuela Garcia MHP to the CVWD water system. Doing so will also reduce the arsenic concentration in the community’s drinking water by 24 ug/L. CVWD will install 7,250 linear feet of 30-inch diameter ductile iron potable water pipeline from the connection at the Manuela Garcia MHP to the existing CVWD water system at the intersection of Avenue 66 and Polk Street. Ultimately, the project will also **improve water quality in the Salton Sea** by reducing arsenic levels in the runoff off that seeps into the connected groundwater aquifer, thus supporting the protection of the Salton Sea wetland habitat areas.



Groundwater Quality Protection Project Sub Area D-3



The *Groundwater Quality Protection Project Sub Area D-3* is a continuation of Mission Springs Water District’s (MSWD’s) Groundwater Quality Protection Program (GQPP). The project aims to protect groundwater quality by converting customers from individual septic systems to sewer service. On-site septic systems increase nitrate contamination levels in local water supply wells, degrading water quality in the Mission Creek Subbasin and potentially in the neighboring Desert Hot Springs Subbasin. The Sub Area D-3 collection system will connect 11 parcels to the MSWD sewer system and abate 6 on-site septic systems. The project will **reduce the amount of nitrogen in the Mission Creek Subbasin by 177 pounds per year**. The project will also treat and recharge 1.55 AFY of treated wastewater to the Mission Creek Subbasin for future recycled water use, which will reduce the amount of imported water needed in the Coachella Valley region.